

## How to prepare your espresso machine for storage during periods of cold weather

If you are unable to store your coffee machine in ambient temperatures above 5°C or cover with a heated insulated blanket to prevent the water in the machine from freezing, you should carry out the following steps to protect your machine from the costly damage caused by allowing the water to freeze!

### Switch off the power and water supply to the machine

Using the hot water valve, empty the boiler to the bottom line on the sight glass cover. Close the hot water valve.

Open the Steam Valve to drain off any residual steam pressure. Leave the valve open even when all flow of steam has stopped.

- **Allow the machine to cool down**



Remove the Chrome Nut from the base fitting of the water level sight glass (shown left), using care in case you haven't allowed the water temperature to have cooled sufficiently to avoid scalding your fingers.

Allow the machine to drain down all water into the drip tray.

Replace the Chrome Nut, ensuring it is correctly tightened, without over-tightening.

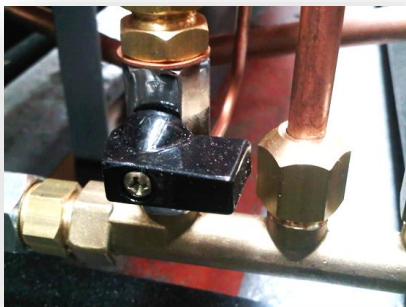
Remove the left hand side panel from the machine.

Locate the lower boiler to sight glass copper pipe connection at the boiler. Slacken off the securing nut and allow any residual water to drain out. Retighten the nut.

Locate the boiler's lower heat exchanger to group copper pipe connection at the heat exchanger. Slacken off the securing nut and drain off the water. Retighten the nut.

Ensure that the electricity and water supply remain switched off!

## To restore your espresso machine for normal operation



Switch on the water supply to the machine – but NOT the power supply

Remove the right hand side panel and locate the Manual Fill Valve (shown here)

Turn the valve handle to allow water to fill the boiler. Continue until the water level appears above the red line in the Water Level Sight Glass

Close the Manual Fill Valve.

Switch on the power supply to the machine and allow it fill as in normal operation.

Allow the machine to heat up and become ready to use